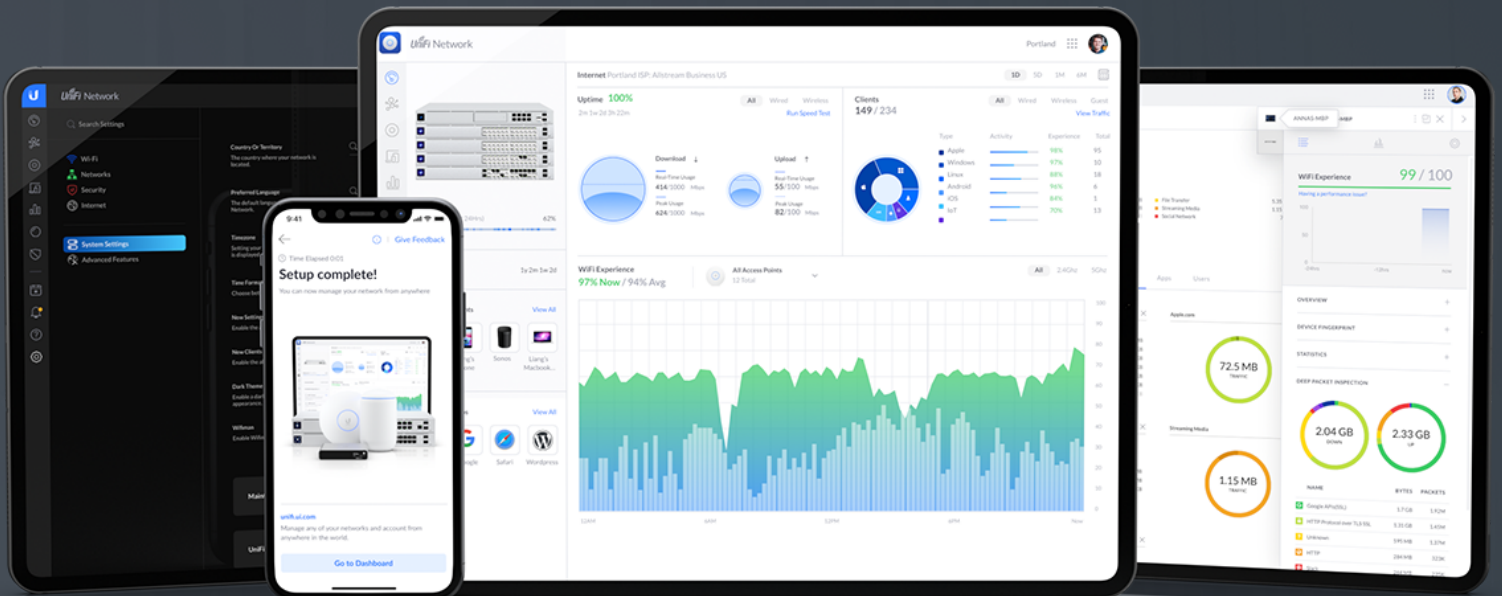




Datasheet UACC-DAC-SFP28/SFP10



Direct Attach Cable

UACC-DAC-SFP28:

SFP28 direct attach cable available in multiple lengths.

The 25 Gbps Direct Attach Cable is an SFP28-compatible cable capable of sustaining 25 Gbps throughput. Available in 4 lengths, this cable is perfect for creating short links between switches that deliver 25 Gbps speed throughout your network.

UACC-DAC-SFP10:

SFP+ direct attach cable available in multiple lengths.

The 10 Gbps Direct Attach Cable is an SFP+ compatible cable capable of sustaining 10 Gbps throughput. Available in 4 lengths, this cable is perfect for creating short links between switches that deliver 10 Gbps speed throughout your network.



UACC-DAC-SFP28

Connector Type	SFP28 to SFP28
EQ	Passive
AWG	26 / 30
Cable Length	0.5 / 1 / 3 / 5 m (1.6 / 3.3 / 9.8 / 16.4 ft)
Cable Jacket	PVC
Jacket OD	4.1 / 5.2 mm
Data Rate	25 Gbps
Jacket Color	Black
Operating Temperature	0 to 70° C (32 to 158° F)

UACC-DAC-SFP10

Connector Type	SFP+ to SFP+
EQ	Passive
AWG	24 / 30
Cable Length	0.5 / 1 / 3 / 5 m (1.6 / 3.3 / 9.8 / 16.4 ft)
Cable Jacket	PVC
Jacket OD	4.2 / 6.0 mm
Data Rate	10 Gbps
Jacket Color	Black
Operating Temperature	0 to 70° C (32 to 158° F)



Specifications are subject to change. Ubiquiti products are sold with a limited warranty described at www.ui.com/support/warranty

©2021 Ubiquiti Inc. All rights reserved. Ubiquiti, Ubiquiti Networks, the Ubiquiti U logo, the Ubiquiti beam logo, UniFi, and UniFi Network are trademarks or registered trademarks of Ubiquiti Inc. in the United States and in other countries. All other trademarks are the property of their respective owners.