

Product Highlights

Long Range PoE Delivery

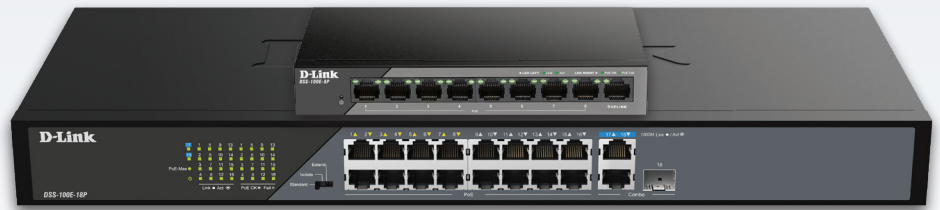
Connect and power cameras up to 250 metres away without the need for additional PoE extenders

Power Your Devices

Supports PoE/PoE+ to connect and power your PoE-capable network devices via Ethernet cables without the need for power adapters

Reliable PoE Connections

Enhanced surge protection on all PoE ports protects the switch when feeding power to outdoor PoE-capable devices



DSS-100E Series

Fast Ethernet PoE Unmanaged Surveillance Switches

Features

Versatile Connectivity

- 8/16 x 10/100 Mbps PoE ports
- 1 x Gigabit Ethernet port
- 1 x GbE/SFP combo uplink port (DSS-100E-18P only)

Power over Ethernet

- High PoE power budget
- Up to 30W power output per port

Reliability

- 6 kV surge protection
- IEEE 802.3x flow control

Easy Setup

- Plug-and-play installation
- Auto MDI/MDIX crossover for all ports
- Automatic detection for long range PoE support (DSS-100E-9P only)

The DSS-100E Series Fast Ethernet PoE Unmanaged Surveillance Switches are specifically designed for surveillance deployment with high PoE power budgets as well as up to 250 metres long-range PoE support¹. This allows cameras to be deployed at an extended distance without the need for additional equipment, providing additional flexibility and convenience as well as saving installation cost.

Long Range Deployment

Specialised hardware enables the DSS-100E Series switches to delivery power and data to cameras up to 250 metres away via a standard Ethernet cable. Unlike conventional designs, the DSS-100E-9P does not require DIP switch configuration and restart to support long range PoE. It automatically detects when it is required and extends the PoE support distance.

Reliable Protection on Every Port

The DSS-100E Series Fast Ethernet PoE Unmanaged Surveillance Switches supports 6kV surge protection to defend your surveillance network against lightening and other incidents resulting in overvoltage. This shield will prevent PoE devices from damage and ensure no interruptions or blackouts in your surveillance systems.

Expand Your Network

The Gigabit uplink port(s) allow businesses to increase their overall network bandwidth using the speed of Gigabit Ethernet. The DSS-100E-18P also comes with a Gigabit combo uplink port to provide additional flexibility to connect over greater distances using fibre optics.

Fast Ethernet PoE Unmanaged Surveillance Switches

Technical Specifications

General

| | | |
|---|--|--|
| Model Number | • DSS-100E-9P | • DSS-100E-18P |
| Device Interfaces | • 8 x 10 / 100 Mbps PoE ports • 1 x 1000BASE-T port | • 16 x 10 / 100 Mbps PoE ports • 1 x 1000BASE-T port • 1 x 100 / 1000BASE-T / SFP combo port |
| Standards | • IEEE 802.3 10BASE-T Ethernet, IEEE 802.3u 100BASE-TX Fast Ethernet, IEEE802.3af/802.3at 100Base-TX PoE, IEEE802.3ab, IEEE 802.3x Flow Control • IEEE 802.3z, IEEE 802.3az Energy-Efficient Ethernet (EEE) (DSS-100E-18P only) | |
| Switching Fabric | • 3.6 Gbps | • 7.2 Gbps |
| 64 Byte Max. Forwarding Rate | • 2.68 Mpps | • 5.36 Mpps |
| Transmission Method | • Store-and-forward | |
| MAC Address Table | • 2k | • 4k |
| Media Interface Exchange | • Auto MDI/MDIX adjustment for all ports | |
| LED Indicators | • Link/activity (per port), Power fail/OK (per PoE port) • Power (per device) (DSS-100E-18P only) | |
| PoE Ports | • Ports 1~8 up to 30 Watts per port | • Ports 1~16 up to 30 Watts per port |
| PoE Power Budget | • 92 Watts | • 230 Watts |
| Surge Protection | • Ports 1~9 up to 6 kV | • Ports 1~18 up to 6 kV |
| Physical | | |
| Dimensions | • 177 x 104 x 26 mm | • 440 x 178 x 44 mm |
| Weight | • 0.396 kg | • 2.137 kg |
| Power | • Internal AC input: 100 ~ 240 V | • External AC input: 100 ~ 240 V |
| Power Consumption | • Maximum: 102 watts (PoE on) • Standby: 10 watts | • Maximum: 265 watts (PoE on) • Standby: 9.63 watts |
| Temperature | • Operating: 0 to 40 °C (32 to 104 °F) | • Storage: -40 to 70 °C (-40 to 158 °F) |
| Humidity | • Operating: 0% to 95% RH non-condensing | • Storage: 0% to 95% RH non-condensing |
| MTBF | • 52,308 hours | • 30,000 hours |
| Heat Dissipation | • Standby: 22.67 BTU/h • Maximum: 486.7 BTU/h | • Standby: 33.4 BTU/h • Maximum: 885.3 BTU/h |
| Fan | • Fanless | • 1 Fan |
| Certifications | • CE, BSMI (DSS-100E-18P only), RoHS | |
| Safety | • LVD | |
| Optional SFP Transceivers (for DSS-100E-18P only) | | |
| DEM-310GT | 1000BASE-LX, Single-mode, 10 km | |
| DEM-311GT | 1000BASE-SX, Multi-mode, 550 m | |
| DEM-312GT2 | 1000BASE-SX, Multi-mode, 2 km | |

¹ Compatible with a wide selection of D-Link PoE-enabled cameras. Please check with your local D-Link customer service for more information. Up to 250 metres connectivity may be affected by cabling quality. We recommend customers to test compatibility before actual physical deployment.



For more information: www.dlink.com

D-Link European Headquarters. D-Link (Europe) Ltd., First Floor, Artemis Building, Odyssey Business Park, West End Road, South Ruislip HA4 6QE, United Kingdom. Specifications are subject to change without notice. D-Link is a registered trademark of D-Link Corporation and its overseas subsidiaries. All other trademarks belong to their respective owners. ©2020 D-Link Corporation. All rights reserved. E&OE.

Updated January 2020

D-Link®